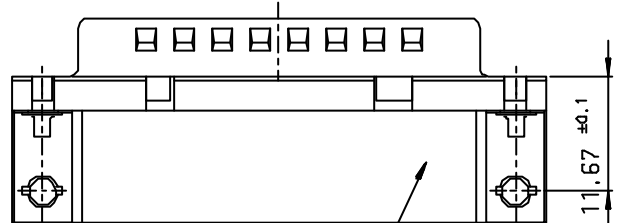
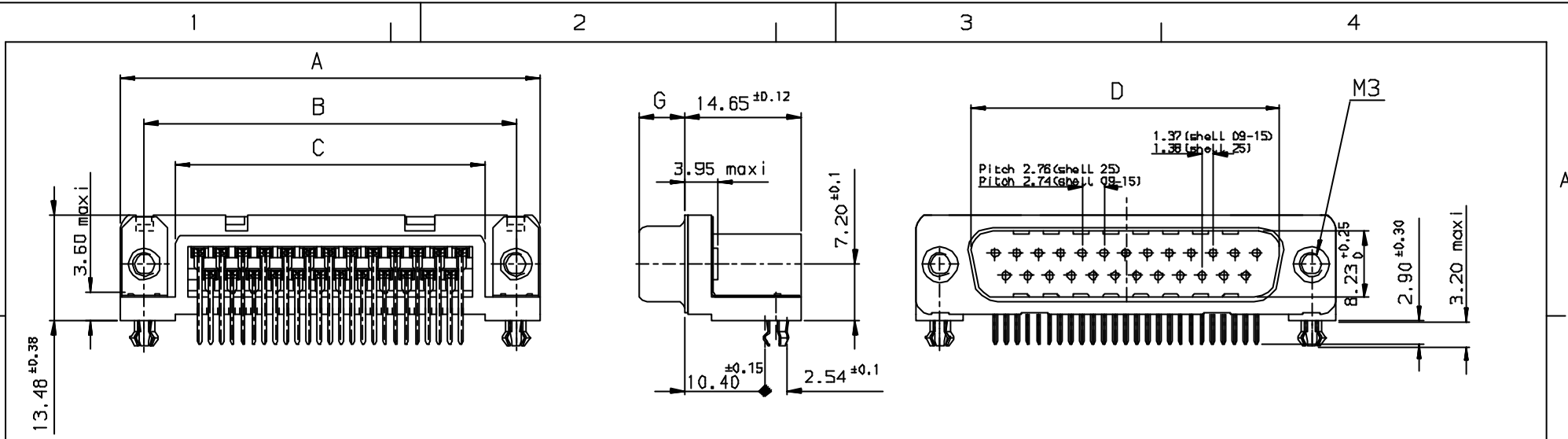


Tous droits strictement réservés. Reproduction ou communication a des tiers interdite sans autorisation écrite de la Direction des ventes et du marketing. Property of FCI. Droits de reproduction FCI.

FCI

All rights strictly reserved. Reproduction or communication to third parties in any form without the written authorization of the sales and marketing department. Property of FCI. Copyright FCI.

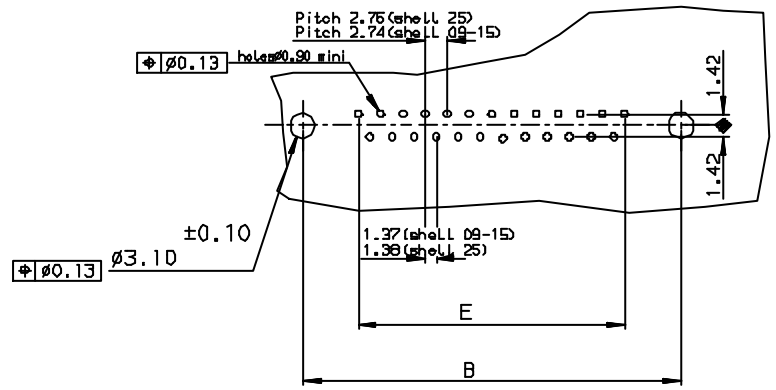


Part Number & Date Code Printing
PC card drilling dimensions(after plating)
(thickness 1.60±0.20mm)

Pull Parts							
SHELL	A±0.38	B±0.12	C±0.10	D±0.25	G±0.25	PART NUMBER	LEAD FREE P/N0
09	30.81	24.99	16.96	16.79	5.90	DD9P13A4GLD0	D09P13A4GLD0**
15	39.14	33.32	25.18	25.12	5.90	D15P13A4GL00	D15P13A4GL00**
25	53.03	47.04	39.12	38.84	5.70	D25P13A4GL00	D25P13A4GL00**

GENERAL CHARACTERISTICS SEE: DRAWING C01-8646-0000

LF FOR LEAD FREE



q	DATE	REVISION DESCRIPTION
1	27/7/05	LEAD FREE DETAILS ADDED

Utr	Eon no	Dr	date
g	105-0124	J5	27/7/05

Dr JOHN SLEEBA		6/01/95	Product Family	✓	Tolerance LINEAR ±0.1 ANGULAR ±1°	Projection MM	Size A3	Scale
Eng GEORGE VJ		6/01/95	Spec ref					
Chr GEORGE VJ		27/07/05	Material					
Appr K Somasundaram		27/07/05						
FCI		Title MALE CONNECT.DELTA D RIGHT ANGLE WITH NUT,HARPOON & METAL PLATE.		Dwg no C01-8646-0164		Rev. 9		
Catalog no		DELTA-D		CUSTOMER COPY		Sheet 1 of 1		